

IP30

**YOUR FREE NEWS AND
INFORMATION BOOKLET**
From
Wickham Market Parish Council

WICKHAM MARKET PARISH NEWS



April 2023

Wickham Market Parish Council

Meets on the third Monday alternate months

Ivor French Chair
David Chenery Vice Chair
Robin Cooke
John Day
Gemma Dempsey-Gray
Kelvin Gray
John Horsnell
Dick Jenkinson
Arthur Stansfield
Anne Westover






Contact us:

Chair: Ivor French: wickhammarketchairperson@gmail.com
Clerk: Al Besly: wickhammarketparishclerk@gmail.com

For more information visit: <http://wickhammarket.onesuffolk.net/>



-  Wickham Market Parish Council Suffolk
-  @WickhamMarketPC
-  Wickham Market Parish Council updates
-  wickhammarketparishsocials

Parish Council Committees and Groups

Finance & General Purpose Committee: Meets on the first Monday alternate months. Responsible for grants and managing financial reporting and budgets.

Environment & Leisure Committee: Meets on the second Monday alternate months and responsibilities include the Cemetery, Allotments and Markets.

Planning Committee: Meets as required and reviews and comments on all planning applications for the Parish.

Neighbourhood Plan Committee: Meets as required and has been responsible for producing the Neighbourhood Plan which is in its closing stages.

Staffing and Personnel Committee: Meets as required and advises the council on all employment matters.

Sizewell C Working Group: Advises the Council on the impact of Sizewell C.

Climate Change Working Group: Responsible for the Climate Action Strategy and advising the Council on Climate Change actions.

Contact: Gemma Dempsey-Gray, gemma1985@gmail.com

WELCOME TO SPRING!

There's so much going on in Wickham Market over the next few months!

We have markets, green gym, litter pick, Coronation celebrations, village hall show, movies, and so much more.

We have lots of organisations doing great things within our community. Have a look at P18 & 19 for some of the contacts and times.

Your Parish Council have also been busy with organising quiet lanes,

youth club, maintenance around the village, keeping a close watch of Sizewell C activities, developing climate change actions to name just a few.

We are always looking for enthusiastic people to join our team, bringing their own skills and knowledge to support our community. If you would like to join as a Parish Councillor, or as a volunteer for any of our activities please contact me or our Clerk at:

wickhammarketparishclerk@gmail.com

Ivor French, Chair

Wickham Market Parish Council

wickhammarketchairperson@gmail.com

NEWS IN BRIEF

- P4 King Charles Coronation Event
- P6 Parish Environmental Group & Green Gym
- P8 Spotlight - Dick Jenkinson
- P10 Sizewell C
- P12 Village Hall Annual Show
- P14 Wickham Market Partnership
- P15 Markets on the Hill
- P16 Neighbourhood Plan

ALSO

- The broken slide in the Children's play park is being replaced
- Parish Council support Archive Centre move
- New parish Clerk's office being organised at the back of the village hall
- New Assistant Parish Clerk soon to be appointed
- Cemetery War Graves signs to be installed
- Litter walk being organised for Saturday 29 April 10am at the Village Hall
- General maintenance last month: Glebe allotment gates, Gravel drain for Village hall car park. Hedges trimmed. Little Lane will be regularly checked for litter and growth

WICKHAM MARKET PARISH NEWS

Produced by
Wickham Market Parish Council
Delivered FREE to all residential properties whose postcode begins
IP13 0

CLIMATE CHANGE WORKING GROUP

Time flies when you are having so much fun! We have been very busy behind the scenes working on the

WICKHAM MARKET GREEN CORONATION EVENT

which will be held on

MONDAY 8TH MAY ON THE PIGHTLE

with a Marquee in case of any adverse weather.

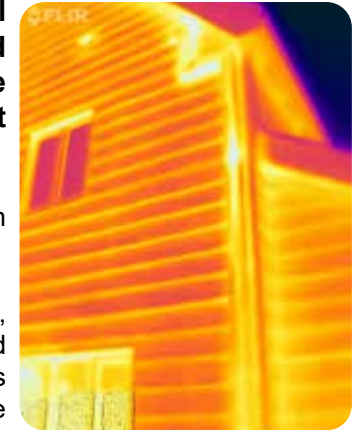
The event will start at 11am and finish at 3pm. We are working on all of the finer details and will update you all via posters around the village and on our Social Media accounts (Facebook, Instagram and Twitter). What I can share is that we have

- Ipswich Wildlife Society coming along to help the children make Bird Boxes,
- A locally renowned Storyteller will share some poems and stories with us.
- Wickham Market Primary School PTA have a raffle for a beautiful home-made bear,
- A competition for Primary School aged children, poster attached!
- The Wellbeing Cafe/Community Allotment will have a stall.
- Face painting,
- A pre-loved teddy tombola,
- Second hand uniform and book sales
- We are planning to have a stall where we will be starting off bee friendly plants to take home.
- We are working on some lovely food to keep your bellies full however, feel free to bring blankets and a picnic!
- We will have refreshments available.

Most importantly, we will be showing our Climate Action Strategy and having feedback forms for you to complete and return to us, so we can work with the community on this. We are working hard on making sure there will be something for everyone to do and see, so please do all come along and support our free event!



We have recently purchased a Thermal Camera so that we can do surveys around the village on houses to help us explore where our houses are losing valuable heat and therefore, money and energy.



This was a scheme idea that we heard about from Suffolk Climate Change Partnership (SCCP).



By the time that you read this, we should have been out and done a few nights of surveys and reported back on the outcomes! If you are interested in having your house surveyed, please contact me on gemmad1985@googlemail.com. The surveys have to be done ideally 2 hours after sunset and homes heated. Once it heats up outside, we will put this on hold and start again once the weather turns again towards the end of the year.

If you would like to help with our fight against climate change, please do contact us on the above email address and you can join our meetings. It is open to all.

Thank you for your ongoing support.

Gemma Dempsey-Gray

LITTER COLLECTION WALK!



How wonderful that spring is springing up on us! We would like to invite residents of Wickham Market to come and join us on a Litter Collection Walk around the village, on Saturday 29th April. We will provide the equipment to litter collect (including hi vis vests) and take a nice gentle clean up stroll around. Please bring gloves if you need them.

We will meet for the walk over at the entrance of the Village Hall, from 10am.

All ages welcome, bring a flask and we can even stop for a hot drink on our journey, we may even make a cheeky cupcake for you!

Look forward to seeing you there!

Gemma Dempsey-Gray

PARISH ENVIRONMENT GROUP & THE OUTDOOR GREEN GYM

We are a small informal group of volunteers who have been working for many years around the village growing, planting trees and hedges and helping to care for the Parish Cemetery.

Support for this work comes from the Suffolk Tree Wardens network, landowners and a grant in 2023 from District Councillor C Poulter. If you wish to get involved, growing trees, planting, caring, ideas for the future and donations please get in touch!

2023 New woodland for Pettistree, Java Lodge Road

The team started planting a new community wood in Pettistree: The Java Lodge Spinney. The land has been made available by local farmer and Pettistree parish councillor, James Hayward, who also mucked in to help volunteers from our two villages. The project has been actively supported by Pettistree PC with Sue Jones taking a lead.



A team of nine set out on a chilly day to make fast work of planting a mix including local provenance oak, horse chestnut, field maple, dogwood and hawthorn. A second day saw further trees planted amounting to some 140. Later in the year Pettistree plan to add fruit and nut trees. We also removed the rapidly decaying plastic spiral guards from a 45m stretch of hedge planted in 1999, a small step towards cleaning up the countryside!



James Hayward said: "I've given a free licence to plant trees and harvest fruit as villagers wish. From my perspective, having an orchard and spinney on that piece of land is something I'll personally enjoy and is a thank you to Pettistree for putting up with my tractors and mud on the roads."

Volunteers will be needed to maintain the Spinney during the year and in the future. We are hoping that some water will also be available as well as tending to trees, tubes and stakes. This will be a pleasant job to do in late afternoons, early evenings as the days get longer.

Chapel Lane & Green Lane Tree line and spinney

Further work was carried out to add to and manage our planting project of 22 oak trees with field maple, hazel and hawthorn along the Green Lane track. These small tree groups will, one day, provide a tree line and habitat corridor visible from various parts of the Parish.



Despite a very dry summer in 2022 we were encouraged by how many trees in the spinney had thrived. After some supplementary planting and mulching with straw there are some 80 native trees tucked into their temporary plastic tubes. It is hoped that one day this will be a landscape feature, providing a haven for birds and wildlife.

Parish Cemetery

Through monthly weekday morning Green Gyms, we have tended young trees and hedge gaps, added donated trees, pruned and mulched. In February another 500 snowdrops (funded by WMPC) were added to the swathe of snowdrops planted over the last 15 years.



Green Gym in Springtime

There is always more to do such as tree growing (in our garden nurseries), tree care, removal of plastic and monitoring plantings in the various locations.

Look out for updates via the Wickham News round robin (email: news@wickhammarket.co.uk) and local Facebook pages.

You can contact Anne Westover, Wickham Market Tree Warden for further information and to find out how you can help.

Email: ennaoverwest@btinternet.com

Anne Westover

SPOTLIGHT

On Dick Jenkinson



Here we highlight a local community project or person in each issue of Wickham Market Parish News. In this issue we talk to Dick Jenkinson about the work he does to support the community.

Hi Dick, thank you so much for all your ongoing work in Wickham Market, not just as a Parish Councillor but as someone who is involved very much at the heart of the community with projects such as The Wickham Market Good Neighbours scheme and The Wickham Market Partnership. We thought we would love to hear more about these organisations, perhaps we could hear a little about where your motivation comes from to stay so busy?

I retired from the Army as a Lieutenant Colonel in the Royal Engineers at 55 after just over 37 years' service. I felt I was too young to retire completely so I joined the Parish Council in 2012 and in the same year became a trustee of the Wickham Market Partnership.

Could you please tell us about the Wickham Market Good Neighbours Scheme, how this came about, its benefits and if there is anything the community could do to support this amazing scheme?

The scheme was set up in 2006 to provide short term help to the residents of Wickham Market and I became the Chairman a couple of years ago. The help we provide includes social support (such as shopping, collecting and dropping off prescriptions), transport (mainly to medical appointments but also for other activities) and minor domestic repairs. All support is provided by local volunteers. The scheme also encourages self-help and friendship within the local community. We provide a befriending service for those that are lonely and find it difficult to get out and about.

We have 32 active volunteers, but only 20 drivers. All volunteers must be DBS (Disclosure and Barring Service) checked and carry out a small amount of compulsory training. This past year we completed over 882 jobs. We are always looking for new volunteers, particularly drivers, if you think you can help please contact me or the Good Neighbours phone and we will send you an information pack. If you need our services, please ring 07914 494108 during working hours.

Could you now tell us about the Wickham Market Partnership, how this began and what its aims and objectives are?

The Wickham Market Partnership is your local charity that has a remit to improve the parish of Wickham Market and surrounding areas, be that through providing support and funding for recreational, sporting, educational or economic benefits. The Charity was started in 2002 and part of our first project was to set up the Library and the Resource Centre. We have supported and been involved in many projects and initiatives since our inception.

We understand that you also help to organise the volunteers day in Wickham Market that is held annually, how would you describe the volunteers in Wickham Market and how important are they to communities like ours?

Volunteers are essential for the running of a community like ours. The Parish Council, the Good Neighbours Scheme, the Village Hall and all the clubs and societies need volunteers to function. All these organisations collectively make our village a better place to live. The number of people prepared to volunteer is sadly reducing, and this means that most organisations are really struggling to keep going. What people perhaps do not realise is that volunteering is good for your own wellbeing as it can be so rewarding.

What other big tasks have you undertaken that you'd like to share with us?

In 2015, when I was Chairman of the Parish Council, I set up a Neighbourhood Plan Committee as we knew that within the next 20 years the Parish would have to accept some development. The aim of the Plan was to try to ensure that we got the right developments in the right places. This has been a very difficult and contentious task, but we have consulted every step of the way to take account of the views of residents.

The Plan is now undergoing a final independent review before it goes to referendum in the village. Details of the Plan and all the supporting documentation can be found at <https://www.wickhammarketnp.org/>. It has taken a long time, but I would like to see this plan come to fruition. As Chairman of our Neighbourhood Plan Committee, it seemed logical that I volunteered to be on the PC Planning Committee and I am currently the Chair.

What does community mean to you?

To me community means living among friends, being able to do those things that you want to, giving back and knowing that help is there if you need it.

Thank you Dick, it has been so kind of you to share these wonderful projects with us in more detail and we thank you for all of your hard work.

Gemma Dempsey-Gray



WICKHAM MARKET PARISH COUNCIL SIZEWELL WORKING GROUP



WMPC have consistently opposed the location of the Southern Park and Ride (SP&R) to the north of Wickham Market, owing to the increased amount of traffic it would bring through the village and the resulting detrimental impact that would have on residents and road users.

EDF estimate that the SP&R will result in 1050 extra vehicle journeys per day through Wickham Market. EDF estimate 1000 heavy goods vehicles per day will use the A12.

The WMPC coordinated monthly meetings from November 2019 with EDF, SCC and ESC. These were chaired by Steve Merry Transport Policy and Development Manager Growth at Suffolk County Council. The aim of the meetings was to challenge EDF on the impact the SP&R site would have on the village road network and to press for mitigation. Our neighbouring Parish representatives were also participants.

During this time and through the Planning Inspectorate Examination WMPC submitted evidence including the 2020 Relevant Representation (objection) and ten further reports to the Planning Inspectorate (2021). Verbal evidence was presented at five of the examination hearings, all live streamed.

EDF hired traffic consultants in early 2022 to produce a traffic mitigation scheme for the village. This comprised measures including signage, build outs, removal of some on street parking and gateway features. EDF suggested this would aid

the movement of vehicles and reduce speed through the village. These proposals were shown to residents at an open weekend, October 9/10th 2021 where feedback was received.

Whilst the scheme may have some merits there are aspects which WMPC/residents still have serious concerns over:

- Lack of positive Speed reduction measures. WMPC and residents have requested 20mph in parts of the village. EDF/SCC consider that this can be achieved through roadside build outs.
- Loss of on street parking is an ongoing concern particularly for the many residents concerned. No suitable replacement parking areas have ever been proposed by EDF.
- WMPC consider that worker travel routes should be monitored and that controls are put in place to deter through village travel and encourage use of A14 and A12. EDF say this will be achieved by introducing a voluntary Worker Code of Conduct.
- WMPC have asked for monitoring of traffic before and during construction so that the source/routes of traffic can be determined. EDF have currently rejected this option.

Currently the Parish Councils await resumption of discussions with EDF relating to the park and ride site (design, screening, management of the HGV traffic management area) and the traffic mitigation measures within the village.

At the current time a hearing as to whether a judicial review of the Government's decision to permit the Development Consent Order (contrary to the recommendation of the Examining Authority) for Sizewell C will be allowed is pending. This hearing should take place in March prior to publication of this newsletter.

The board of EDF are likely to make the decision whether to invest in Sizewell C by early 2024. Billions of pounds need to be raised from private investors before Sizewell C can go ahead. Our government has proposed using Regulated Asset Base to fund part of Sizewell C. The nuclear RAB model is a method of funding that is likely to add £12 to £20 per year to everyone's energy bills for the construction of SZC.

Meanwhile EDF and Essex and Suffolk Water need to resolve how up to 2 million litres of water per day required to run Sizewell C will be provided. The big concern here is that East Anglia is officially still in drought.

<http://wickhammarket.onesuffolk.net/parish-council/sizewell-c/>

Arthur Stansfield

Wickham Market Village Hall 72nd Annual Show 2023

After a three-year break we are pleased to announce that 2023 will see the 72nd Wickham Market Annual Show in the Village Hall over the weekend of Saturday 5th and Sunday 6th August.

Our theme for the show will be 'Trees'.

We have chosen this to celebrate the beauty of trees and their importance in our daily lives. This was the theme we had originally chosen for 2020 before events were cancelled.

Participants can choose to reflect the theme in entries to classes such as foliage displays, drawings, paintings, patchwork and handi-craft along with the specifically themed classes.

There will be the usual produce, flower, cookery/kitchen craft, handi-craft, photography, and children's classes. We hope that you have time to prepare, grow, design, make and go out with your cameras and sketch books over the next 4 months!

The schedule plus entry form is available from various village locations including Suffolk Sense, R and S Hardware, Inspirations, the Library and Resource centre foyer and the Post Office. Local school children will receive a copy of the schedule from the primary school.



We will also publish an electronic version for those who prefer the option of printing and completing the entry form at home. This can be found on Facebook Visit Wickham Market, Community and WM Village Show web pages.

We look forward to seeing you with an array of wonderful entries in August to create a celebration of creative talents. Out of a total 107 classes, 23 (some of the vegetable and plant produce classes) are for Wickham Market residents only. The remaining 84 classes are open to all other people, friends and families for entries!

The show team this year are Anne, Alan, Chris, Alison, Ali, Barbara, Rosemary, Gloria and Philip. All details are in the Schedule.

WICKHAM MARKET MOVIES

Wickham Market Movies shows films at Wickham Market Village Hall on the 3rd Saturday of every month – 7.00 for 7.30 pm. Future presentations include : -

15th April "Ticket to Paradise", with George Clooney and Julia Roberts
20th May "See How they Run", a whodunnit set in 1950's London
17th June "Living", with Bill Nighy breaking out of his office routine
15th July "What's Love Got to Do With It?", with Lily James and Emma Thompson

The Wickham Market Partnership is your local charity that has a remit to improve the parish of Wickham Market and surrounding areas, be that through providing support and funding for recreational, sporting, educational or economic benefits.



Established in 2002 it has been involved in a wide range of local projects including installing tennis courts, play equipment, the skate park, the basketball court, bringing markets to the square, supporting other local organisations (including the primary school) and of course the Resource Centre which houses the Library and the Community Rooms (the home of the Partnership). Six volunteer Trustees meet monthly to deliver these benefits.

We also host a website, covering the costs of providing an excellent electronic portal to our community and delivering the Wickham Market Round Robin email to over 450 households every week. You can find out more about what we have achieved over the years by viewing our Timeline at www.visitwickhammarket.co.uk/wickham-market-partnership

If you would like to join our village email, which brings you weekly news about local activities and events, please contact our Administrative Assistant, Karen Burrows, at news@wickhammarket.co.uk when she will add you to our mailing list (no addresses visible to the public). News items also go on to our website. Meeting rooms are available to hire at the Resource Centre. The Partnership can be contacted at resource.centre1@btinternet.com or leave a message on 01728 747782 (office hours usually Tuesday and Thursday mornings).



Our markets take place in the historic market square, on The Hill. Dates for the two larger markets are:

- **Summer Market Saturday 19th August 9am - 3pm**
- **Winter Festive Market Saturday 2nd December 9am - 2pm**

Weekly morning markets (Wednesday and Saturday), are often small but provide an additional opportunity to buy produce and other items.

Wednesdays: vegetable & flowering plants will be available from Etheridge Nurseries (return later in April), the Cheese and Pie Man and DPC Fish (1st and 3rd Wednesdays).

Saturdays: Newbourne Vegetables, Quince Tree Preserves and often more. Occasional stalls on either day include clothing, Lavender Crafts, handmade cards, Bric-a-Brac and books.

These markets supplement our range of shops and refreshment facilities in and around the square; R&S Hardware, Elizabeth Hospice, Pharmacy, Revett & Sons Butchers, McColls, Inspirations, Suffolk Sense, Post Office and store and the COOP. Café 46 and Tea Pot Cafe provide a welcome rest and refreshment. Flaming Fryer, New Peach Bower and The Bengal provide food and meals.

To book a market stall space (own table/and cover needed) please contact: wickhammarketparishclerk@gmail.com

Mini Markets will be held at Suffolk Sense (both inside and outside next to Café 46) on Saturdays April 22nd, May 13th, and the first and third Saturdays June, July and August. Pop into the shop to find out more.

For updates check Facebook pages for Wickham Market PC and Community. Subscribe to news@wickhammarket.co.uk to receive email updates via Round Robin. www.wickhammarket.onesuffolk.net/markets

Anne Westover

WICKHAM MARKET NEIGHBOURHOOD PLAN

Along with many other towns and villages across the country, Wickham Market Parish Council took the decision to develop its own Neighbourhood Plan in 2015.



Work on the Neighbourhood Plan began with the formation of a committee to take forward the development of the Plan. Essentially, Neighbourhood Plans give local people the power to shape the future of where they live. In East Suffolk there are 17 Neighbourhood Plans in place with 20, including our own, being prepared.

It has been long time in the making, not helped by Covid, but we are now in the final stages of the Neighbourhood Planning process. A final draft of the plan was submitted to East Suffolk Council in December 2022 who then appointed an independent examiner. We are currently in the process of responding to initial comments received from the examiner. The examiner will then issue his final report and it is anticipated that East Suffolk Council will then proceed to holding a referendum with residents of the Parish to adopt the plan in the next few months.

More details can be found on our Neighbourhood Plan website <https://www.wickhammarketnp.org/> and on the East Suffolk Council's portal <https://www.eastsuffolk.gov.uk/planning/neighbourhood-planning/neighbourhood-plans-in-the-area/wickham-market-neighbourhood-area/>

More information will be published in the next issue of the Parish News.

Ray Lewis

CELEBRATION for the **KING'S CORONATION** at **Wickham Market Royal British Legion**

Saturday May 6th 2023, Open house all day, Opening 11:00 till 23:00

Please come along

Have a drink and watch the Coronation

Have a drink and have a game of snooker

Have a drink and a spot of finger food

Have a drink and chit chat

Whatever you feel like to have fun! Bring a friend, members and non members are welcome on this day to celebrate

WICKHAM MARKET PLAYING FIELD BOWLS CLUB



WHY NOT GIVE US A TRY?

Wickham Market Playing Field Bowls Club are your local league Bowls Club and are here to help you! Our green (on the village playing field near the village hall) will be opening for the 2023 summer season in April.

Why not turn up for a friendly and informal "roll-up" (taster session)? You can do this at an Open Day to be advertised in April or for a one-to-one session at times for your convenience. We can lend you the necessary bowls to try this sport and there will be friendly and experienced bowlers on hand to help and advise you. All you need to provide are flat soled shoes (most trainer type footwear will comply).

Just contact Bruce Laws, Club Secretary by phone or text on 01728 746715 or 07929 647 660 or Barrie Cracknell, Club Chairman and Captain, on 01728 746300 and we will get back to you with information and an invitation to meet at the green.

Trudy Walker and Cynthia Howlett would like to invite you to

Songs of Praise **To celebrate the life of their** **father, Percy Mapperley.** **3pm Sunday 11th June 2023** **St Mary's Dallinghoo**

Refreshments will be served afterwards
Contributions of food welcome!



Please come prepared to share your memories of Percy. You can read them yourself, or ask for them to be read for you.

If there is a hymn that you particularly associate with Percy, please contact Sheila West on 01473 737440 or Annabel Brown on h.a.brown@outlook.com.

Please send your memories (even if you are going to read them yourself) and hymn suggestions by May 30th

USEFUL INFORMATION AND CONTACTS

Suffolk County Council: Highways, Recycling

<https://www.suffolk.gov.uk/> <https://highwaysreporting.suffolk.gov.uk/>
0345 606 6067

East Suffolk Council: Waste collection, Pay car parks, Planning

<https://www.eastsuffolk.gov.uk/> 0333 016 2000

Wickham Market Parish Council: Cemetery, Playing Fields, Allotments, Markets. <http://wickhammarket.onesuffolk.net/parish-council/wickhammarketparishclerk@gmail.com>

Citizens Advice East Suffolk:

14 Colonial House, Station Rd, Leiston IP16 4JD

Open Mon, Tue, Thur, Fri 10 - 2 pm

Wickham Market drop in service:

Resource Centre (next to the Library)
Tuesday 1.30 - 3.30 pm.

www.leistoncab.org

www.citizensadvice.org.uk

01728 832193 or

0808 2787868 (Free)

Disability Advice Service

(East Suffolk): 01394 387070

Good Neighbour Scheme: (GNS)

Provides friendship and support with shopping, posting letters, filling forms, computers, dog walking, DIY, gardening, fitness, transport, home from hospital service etc. 07914 494108.

Lookupstayup: Wellbeing for everyone.

A small independent nurse-led company that aims to improve peoples' quality of life, prevent social isolation and promote physical, emotional and mental well-being. Working with individuals and families to prevent crisis.

www.lookupstayup.com

07798 738918

Wellbeing Tree Café at The Aspire Centre. Relax, chat and make new friends over a hot drink and cake.
Wednesdays 10.30 - 12.30.

Men's Shed: Old Archive Centre behind the Village Hall. Social and creative centre.

Mondays 2 pm

www.wmshed.org.uk 01728 747782

INTERESTS

Youth Football Club, Simon's Cross Playing Field, IP13 0ST.
Steph: 07778 880735.

Football Club: 01728 747731

Sport and Social Club, behind the Village Hall.

www.wickhammarketfc.co.uk

Tennis Club, Simon's Cross Playing Field: 01728 746736

Bowls Club (playing Field):
01728 746715

Red Triangle Bowls Club:
01728 604491

Do you run a community service or club in Wickham Market that could be added here? Contact:
wickhammarketparishclerk@gmail.com

WICKHAM MARKET LIBRARY

Chapel Lane, IP13 0SD. Open

Tuesday to Friday: 9.30 - 5.30

Saturday: 10 - 12.30 then 1 - 4.30

help@suffolklibraries.co.uk

01728 747216

Also at the Library:

Bookstart Story Time

Tuesdays 11.00 - 11.30am

Tot Rock Preschool songs & rhymes.

Tuesdays 11.00 - 11.30 am.

Stories & Rhymes for preschool

Tuesdays 2.00 - 2.30 pm

Sewing Group:

Thursdays 1.30 - 4.30 pm.

01728 747987

Lego at the Library:

Monthly third Saturday 10.30 - 4pm.

VILLAGE HALL

Bookings: Kay Brundell 07916 271688

Also at the Village Hall

Gardening Club:

Monthly third Thursday 7:30 pm

wmgardenclub27@gmail.com

Community Cuppa/Chinwag

For those in later life (65+):

Monthly second Thursday 2 - 4 pm.

Community Club: social activities and support for those new to the area, Friday mornings

Val Mann: val@penpal.me.uk

01728 747078

Little Treasures: Drop-in for parents/carers with babies age 0 to 15 months in the back room

Wednesdays 1.30 - 3.30 pm

Wickham Market Movies

Pete Holden 01728 747229

Little Kickers Football:

Mondays 09.30. Two age groups

- 18 months to 30 months

- 2½ to 3½.

www.littlekickers.co.uk 07762 341982

ALL SAINTS CHURCH

Crown Lane, IP13 0SA

Rev Leslie Siu 01728 561572

leslie@wickhammarketchurch.org

www.wickhammarketchurch.org

Open Pantry: Fresh food and household goods shared with anyone in need.
Thursdays 9 - 11 am.

Open Door: coffee, tea, biscuits and friendship.

Fridays 10am to noon

Bell Ringing: Monday Evenings
from 7:30 - 9pm

BEEHIVE BUILDING

Crown Lane

Bumblebees: Toddlers Group Age 0-4
Suggested cost £1 per session.

Tuesdays 9 - 11.30 term time.

Rainbows (age 4-7), **Brownies** (age 7-10), **Guides** (age 10+)

Linda Payne: 01728 604491.

RESOURCE CENTRE Chapel Lane, IP13 0SD: 01728 747782

ROYAL BRITISH LEGION CLUB
01728 746915

AVOCET ACADEMY:
01728 746405

ARCHIVE CENTRE:
Philip Tallent 01728 746058

WICKHAM MARKET GREEN

CORONATION EVENT

MONDAY 8 MAY

11am to 3pm

ON THE PIGHTLE GREEN

Behind the Library, with a Marquee in case of any adverse weather.

EXPECT

Making Bird Boxes with Ipswich Wildlife Society

A competition for Primary School aged children

Wellbeing Cafe and Community Allotment

A raffle for a beautiful homemade bear

Second hand uniform and book sales

Bee friendly plants to take home

Bike powered smoothie maker

A pre-loved teddy tombola

Face painting

A Storyteller

We will have refreshments available but

Feel free to bring blankets and a picnic!

For More Information:

<http://wickhammarket.onesuffolk.net/events/>



Wickham Market Parish Council Suffolk



@WickhamMarketPC



Wickham Market Parish Council updates



wickhammarketparishsocials

Organised by:

Wickham Market Parish Council

CLIMATE CHANGE

WORKING GROUP